

JOB TITLE:

NUMBER OF COLOR: ■ **CYAN** ■ **MAGENTA** ■ **YELLOW** ■ **BLACK**

TYPE: TRAY CARD

DUE DATE:

**NOTE TO OUR CLIENTS:**

**RESOLUTION:**

Images should be 300dpi at 100% size when imported into layout programs.

**FONTS:**

Include all fonts when sending your files. Adobe Illustrator will automatically substitute missing fonts. To avoid this issue, "outline" all fonts in your artwork.

**COLOR:**

Convert all artwork to 4 Color CMYK process. RGB color will NOT appear correctly when printed.

**CUT LINE:**

Everything outside the cut line will be cut off.

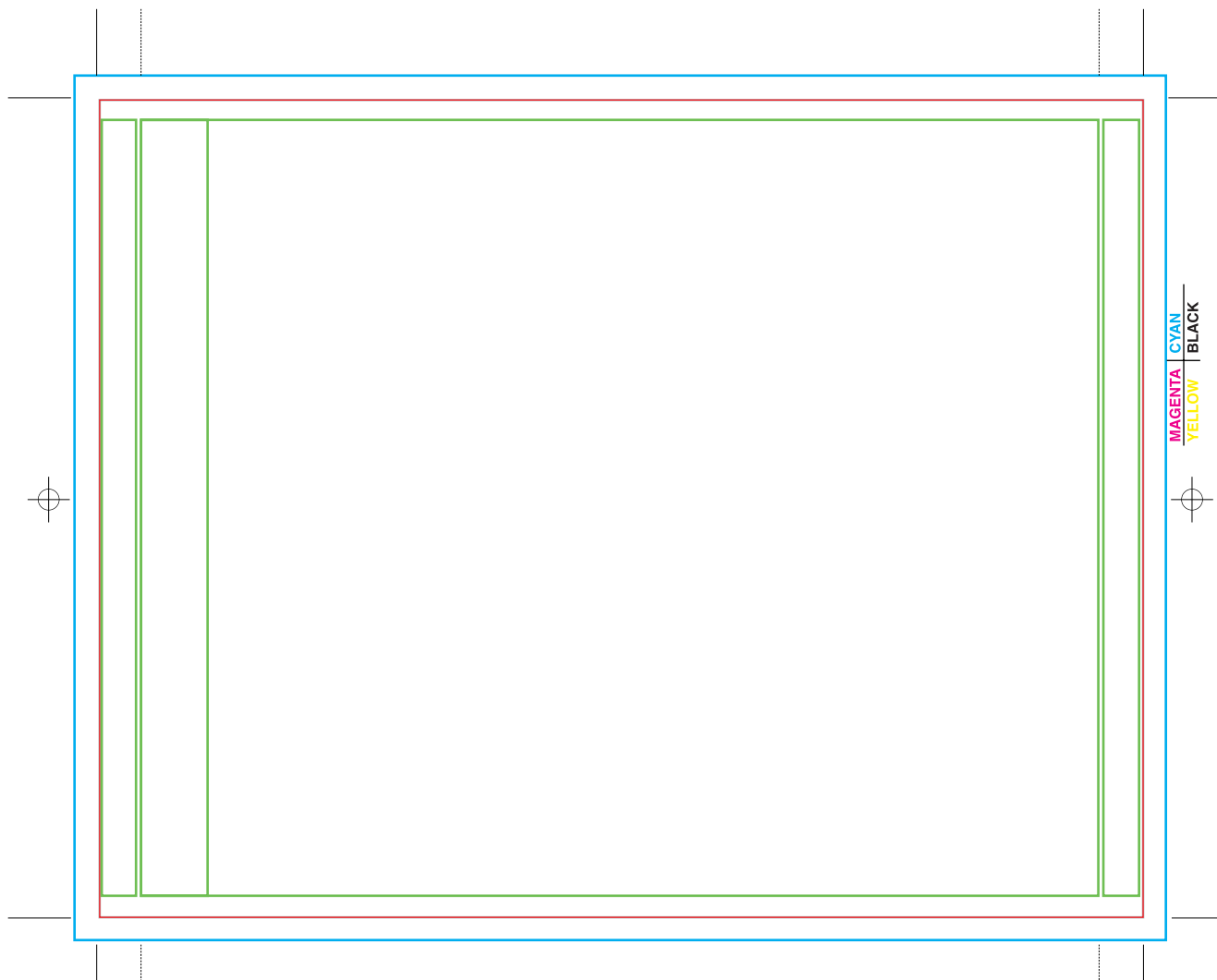
**SAFETY MARGIN:**

All text MUST be inside the safety line.

**BLEED AREA:**

If you have artwork on all 4 sides, you MUST extend your final artwork at least 1/8" (0.125 in) for proper bleed. This does NOT apply if all 4 sides are white

**CD Traycard (Inside)**



**CD Traycard Outside**

